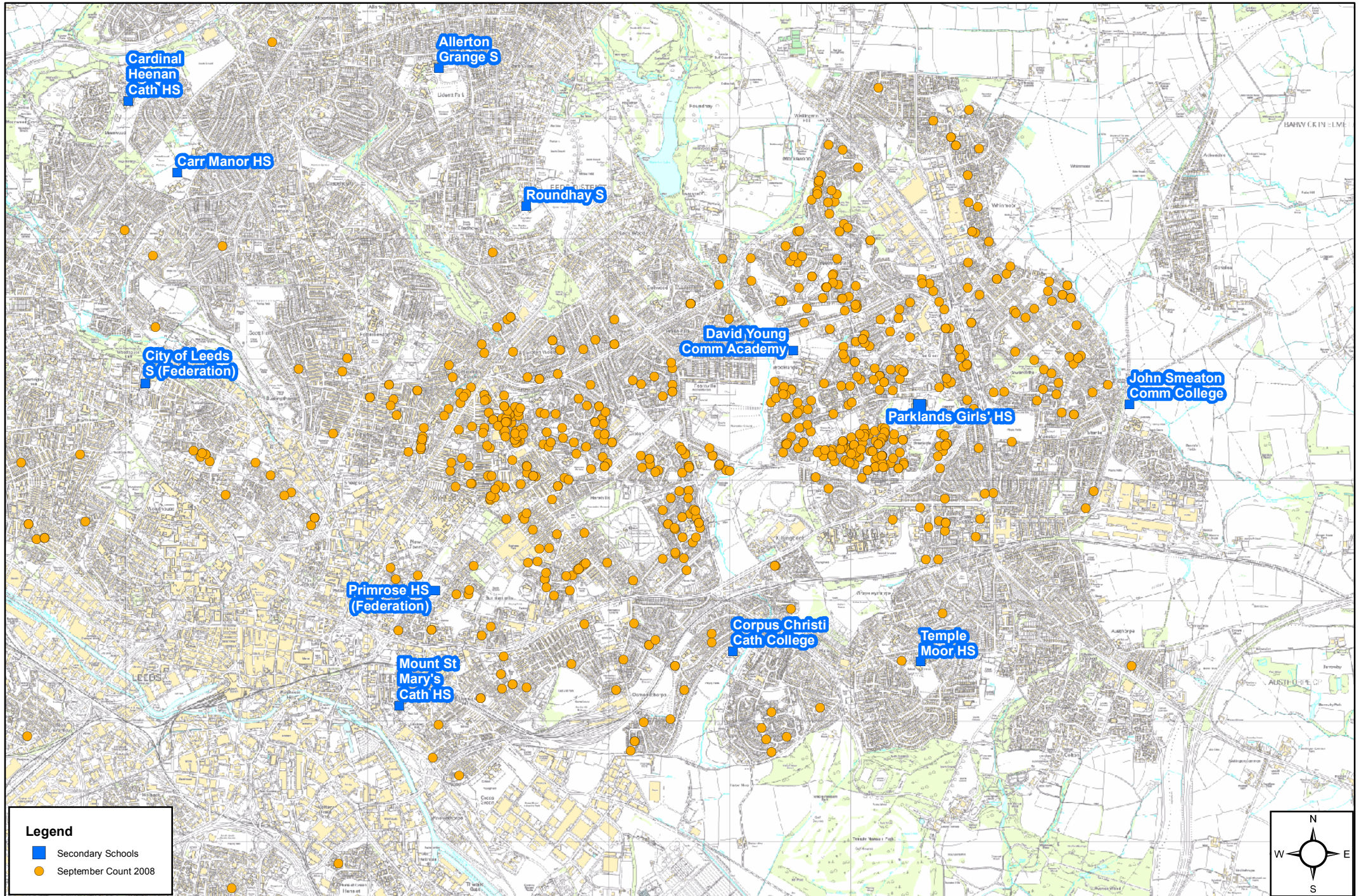


# Pupils Attending Parklands Girls' HS (4059) (September Count 2008)



This map is based upon Ordnance Survey material with the permission of Ordnance Survey on behalf of the Controller of Her Majesty's Stationary office © Crown copyright. Unauthorised reproduction infringes Crown copyright and may lead to prosecution or civil proceedings. Leeds City Council 100019567 2008  
This map is produced by the School Organisation Team, Education Leeds. For further information, please call 0113 224 3867  
Thursday, December 11, 2008 15:24:08  
G:\GIS\New Projects\School Organisation\Visual Basic Modules\081211 - September Count Mapping Secondary\SepCntSecondaryMaps\081211a.mxd

